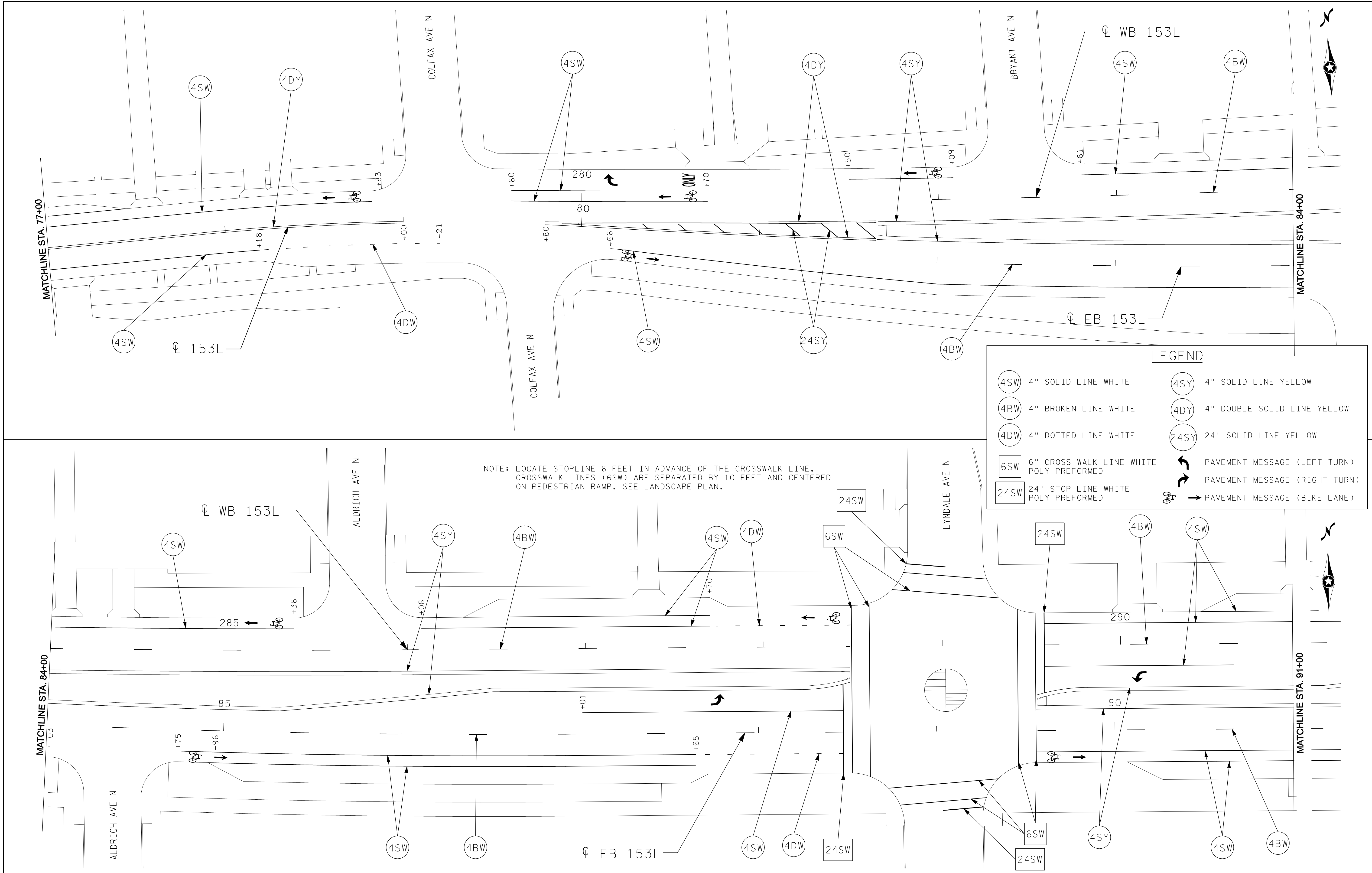


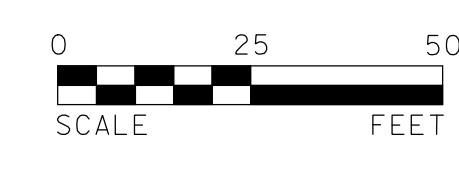
PLOT DRIVER: pdf..plt
 PEN TABLE: STONEBROOKE.TBL

USER: lporfer
 MODEL: Striping-2
 FILE: s:\projects\CSAH153\04594\ROAD_DESIGN\SHEETS\04594_strip.dgn
 PLOT DATE: 12/15/2005 1:16:45 PM



NOTE: LOCATE STOPLINE 6 FEET IN ADVANCE OF THE CROSSWALK LINE.
 CROSSWALK LINES (6SW) ARE SEPARATED BY 10 FEET AND CENTERED ON PEDESTRIAN RAMP. SEE LANDSCAPE PLAN.

LEGEND			
(4SW)	4" SOLID LINE WHITE	(4SY)	4" SOLID LINE YELLOW
(4BW)	4" BROKEN LINE WHITE	(4DY)	4" DOUBLE SOLID LINE YELLOW
(4DW)	4" DOTTED LINE WHITE	(24SY)	24" SOLID LINE YELLOW
[6SW]	6" CROSS WALK LINE WHITE POLY PREFORMED	↩	PAVEMENT MESSAGE (LEFT TURN)
[24SW]	24" STOP LINE WHITE POLY PREFORMED	↪	PAVEMENT MESSAGE (RIGHT TURN)
		↪	PAVEMENT MESSAGE (BIKE LANE)



I HEREBY CERTIFY THAT THIS PLAN, SPECIFICATION, OR REPORT WAS PREPARED BY ME OR UNDER MY DIRECT SUPERVISION AND THAT I AM A DULY LICENSED PROFESSIONAL ENGINEER UNDER THE LAWS OF THE STATE OF MINNESOTA.

Timothy R. Arvidson
 NAME: TIMOTHY R. ARVIDSON LIC. NO.: 25502 DATE: 12/6/2005

DESIGNED: WM
 DRAWN: LWP
 CHECKED: TRA



HENNEPIN COUNTY
 DEPARTMENT OF PUBLIC WORKS

STRIPING PLAN
 PLAN PAGE 6 OF 7
 S.P. 27-753-11
 C.P. 0302 CSAH 153 (LOWRY AVE N)

SHEET 104
 OF 104
 209